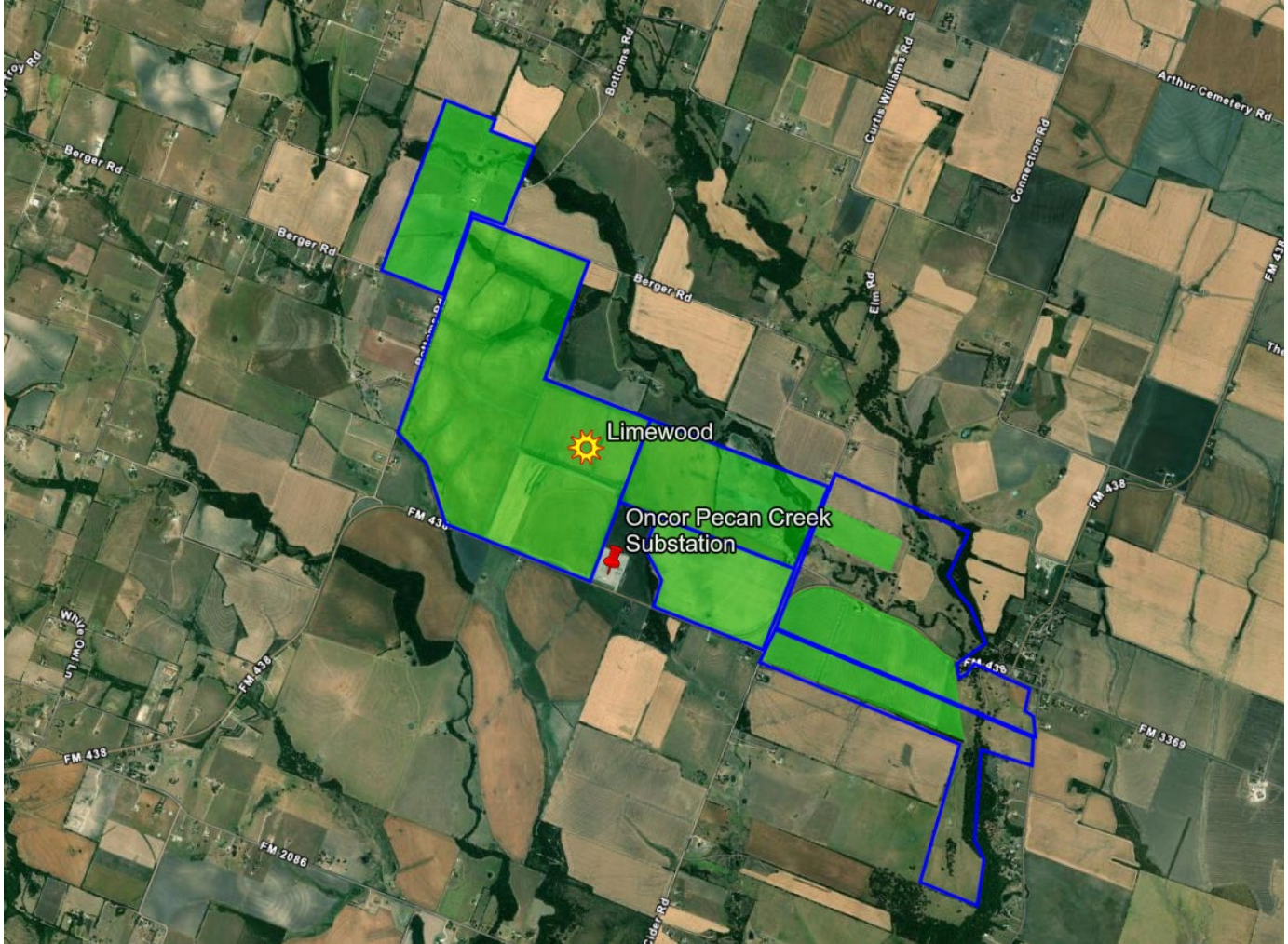


Project Area Map



- The Limewood Solar project is located off of FM438 between Temple and Oenaville in Bell County.
- This project will be located on privately owned land, have an approximate 1500-acre footprint, and include *minimum* setbacks of 50 feet.
- Equipment including solar panels, inverters, and a substation that will interconnect to the existing Temple Pecan Creek substation, is anticipated to use approximately 1200 acres of the 1500-acre footprint.

